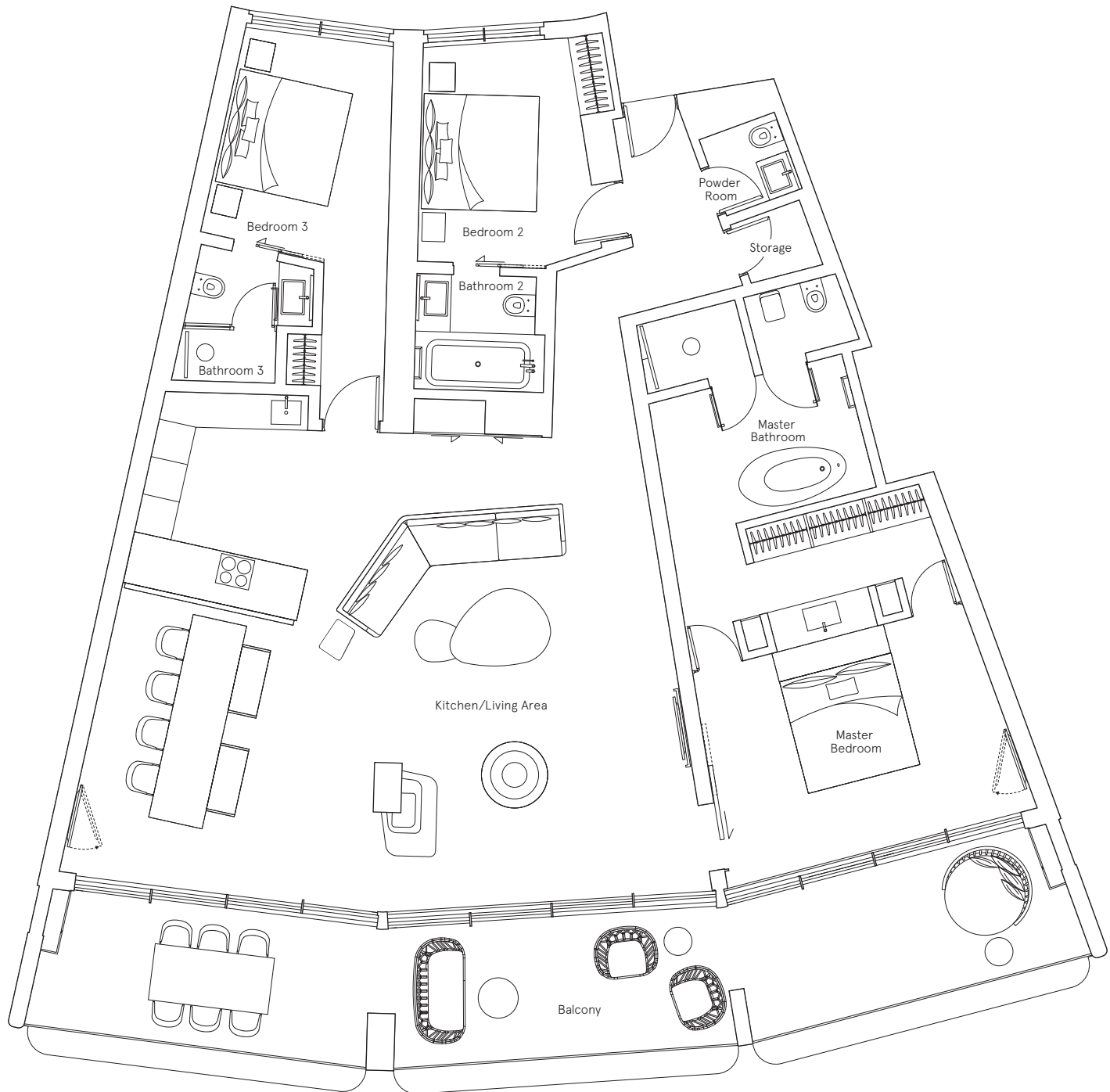


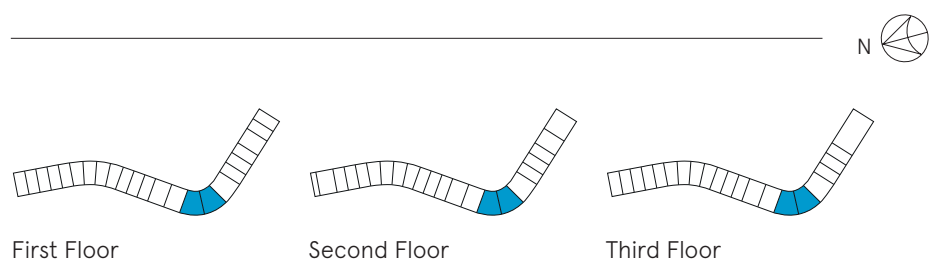
3 BEDROOM TYPE A

215 415
216 416
314
315



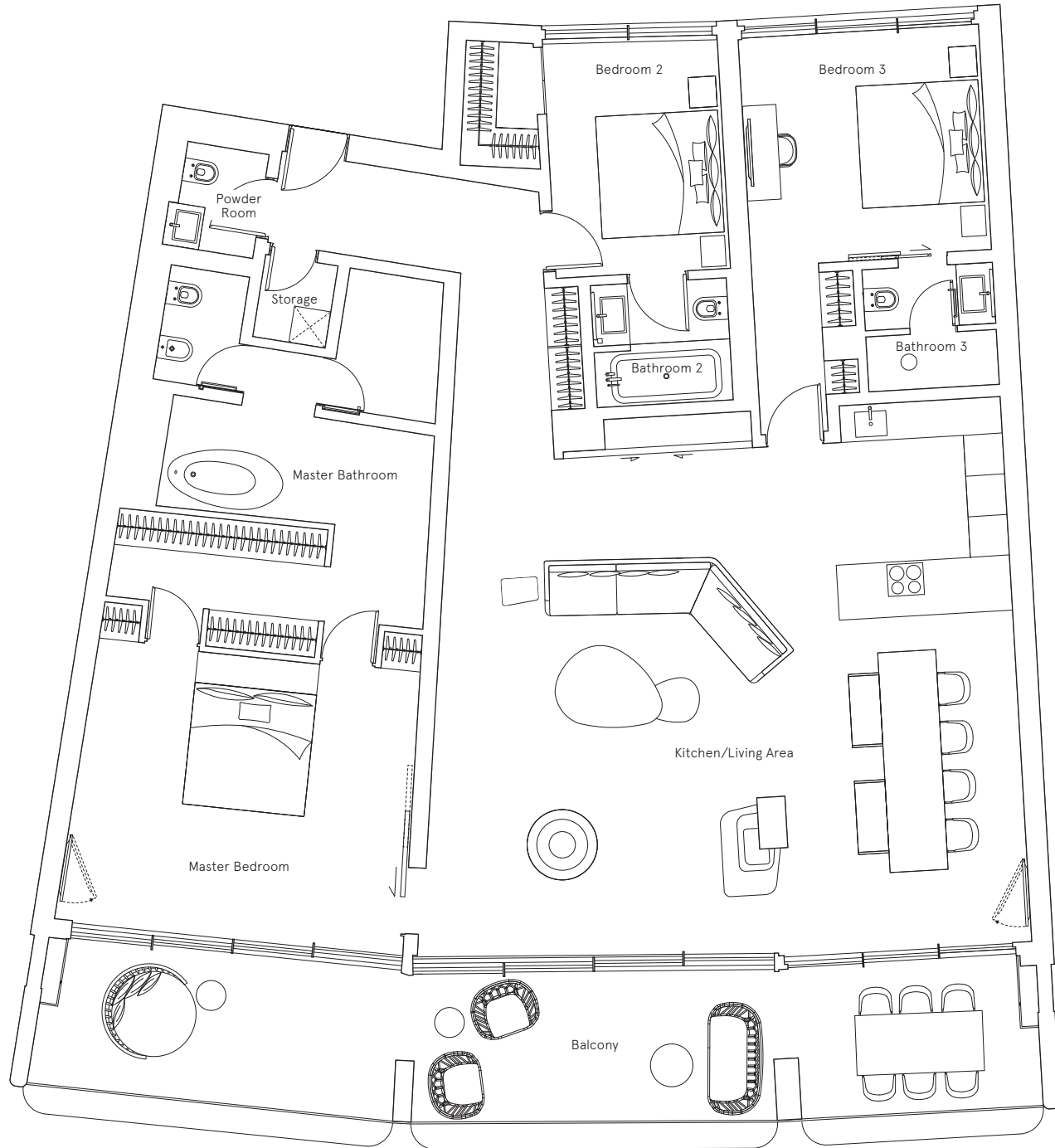
Sea view

Kitchen/Living Area	8.95m x 11.30m	29'4" x 37'1"
Master Bedroom	3.75m x 5.55m	12'4" x 18'3"
Bedroom 2	3.85m x 3.15m	12'8" x 10'4"
Bedroom 3	6.50m x 3.25m	21'4" x 10'8"
Balcony	50.70 sq m	546 sq ft
TOTAL	171.40 sq m	1,845 sq ft



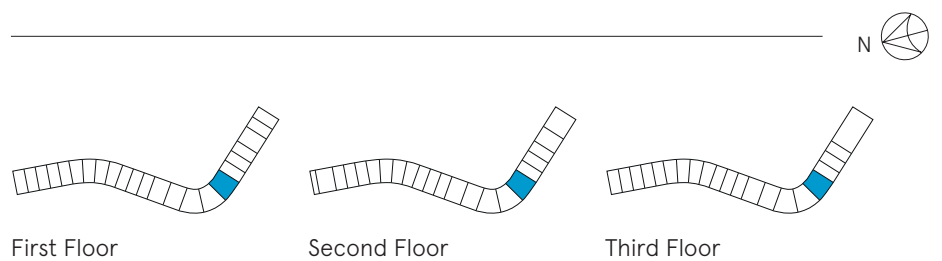
3 BEDROOM TYPE B

217
316
417



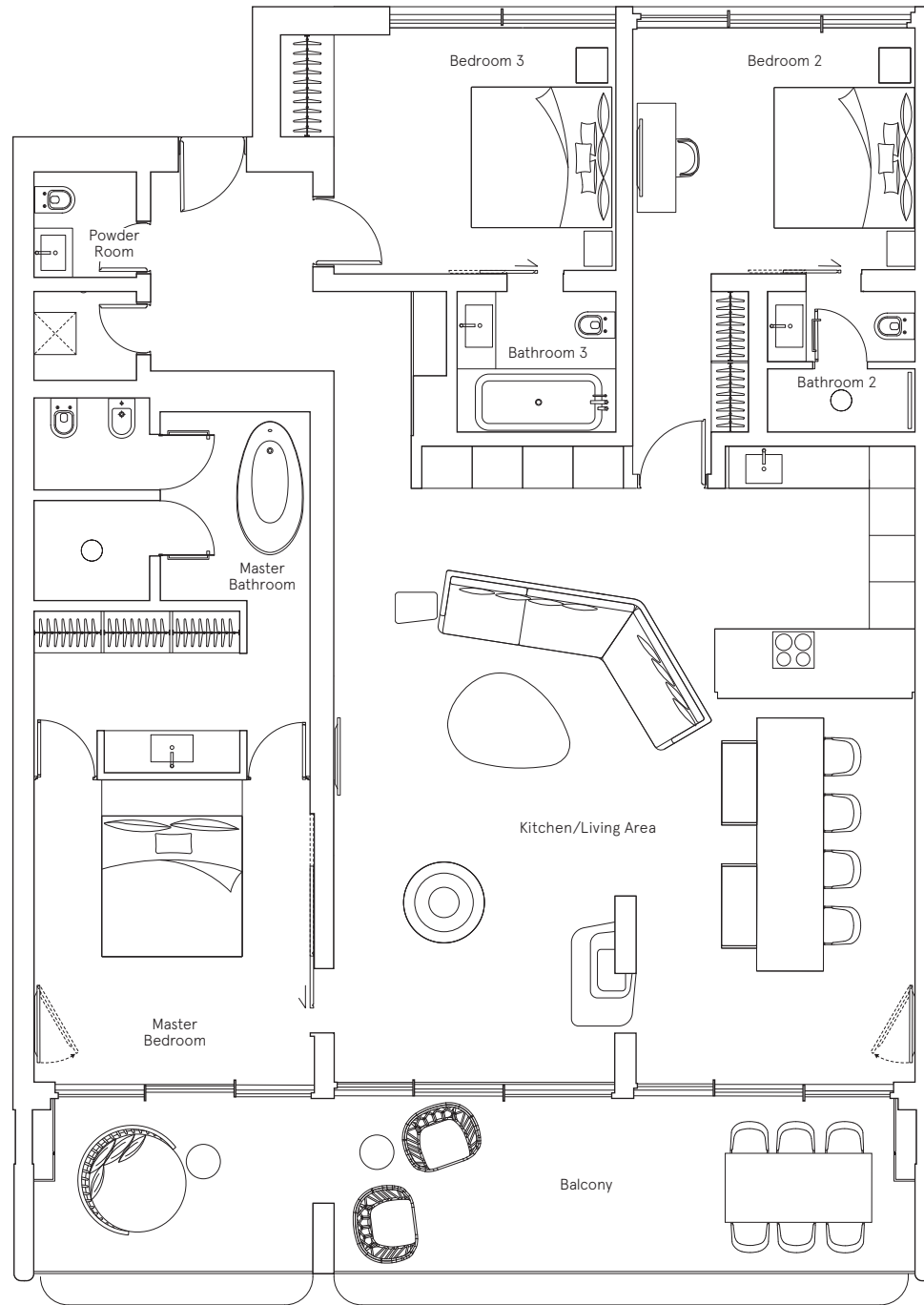
Sea view

Kitchen/Living Area	8.90m x 10.05m	29'2" x 33'0"
Master Bedroom	4.60m x 5.75m	15'1" x 18'10"
Bedroom 2	3.85m x 4.10m	12'8" x 13'5"
Bedroom 3	6.45m x 3.95m	21'2" x 13'0"
Balcony	46.15 sq m	497 sq ft
TOTAL	188.75 sq m	2,032 sq ft



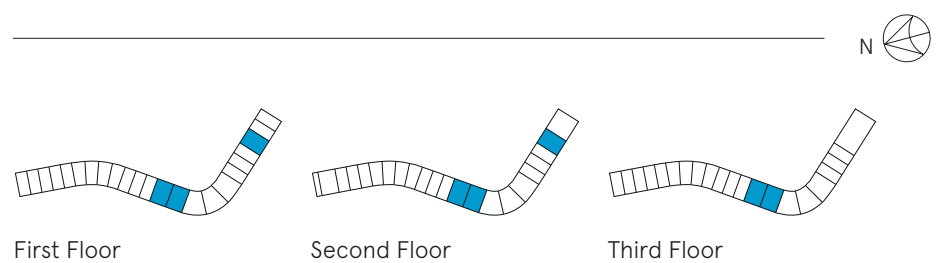
3 BEDROOM TYPE C

213 313
214 320
221 413
312 414



Sea view

Kitchen/Living Area	8.45m x 8.25m	27'9" x 27'1"
Master Bedroom	4.30m x 4.00m	14'1" x 13'1"
Bedroom 2	3.45m x 4.75m	11'4" x 15'7"
Bedroom 3	6.30m x 4.00m	20'8" x 13'1"
Balcony	36.40 sq m	392 sq ft
TOTAL	164.86 sq m	1,774 sq ft

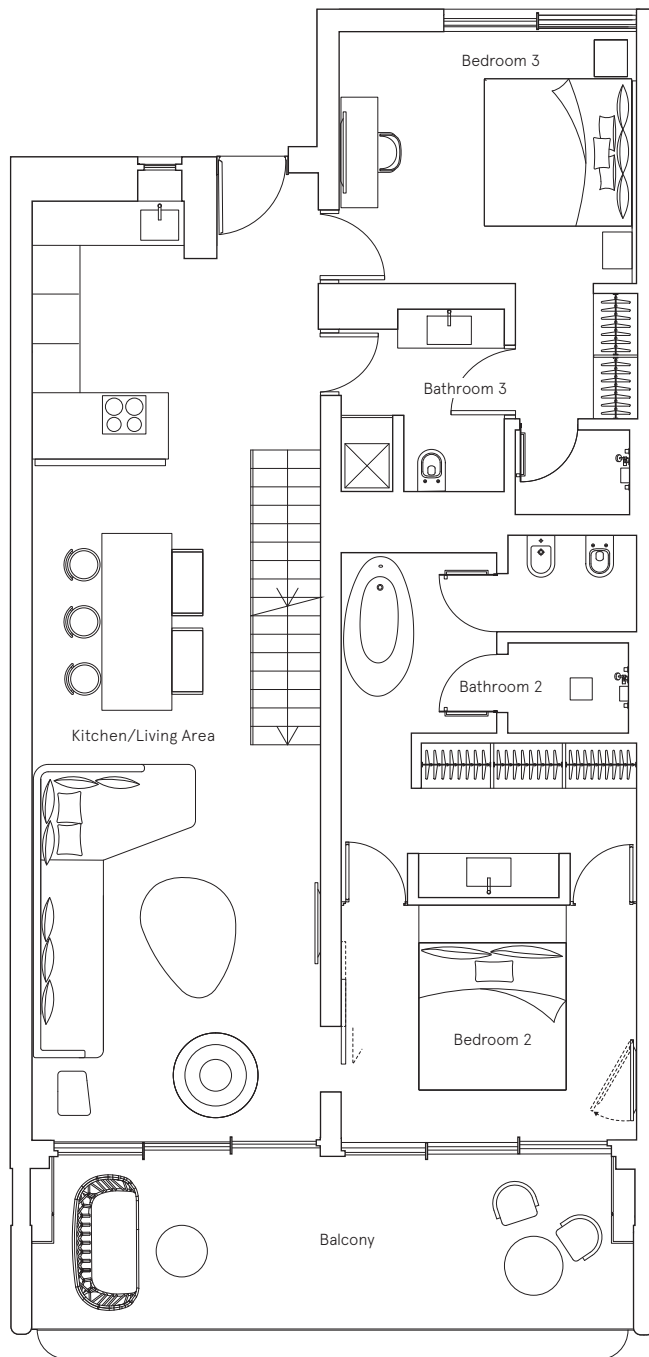


3 BEDROOM DUPLEX

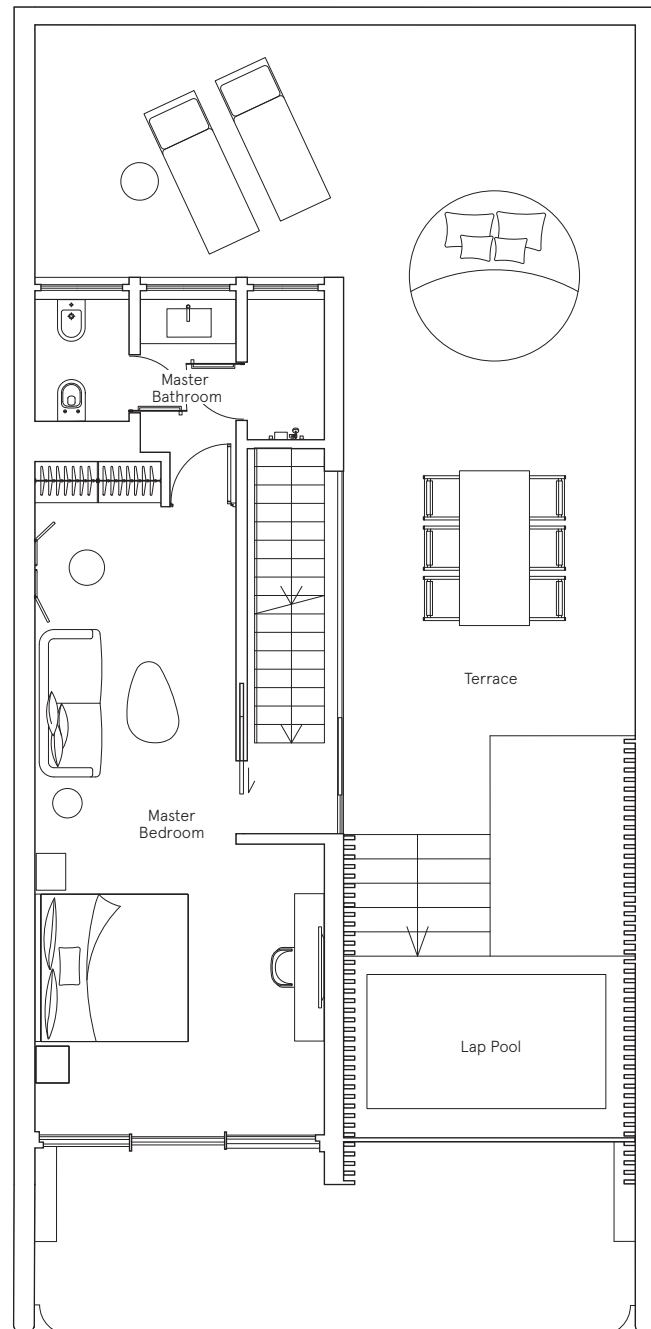
TYPE A

319 405
403 411

Lower Floor

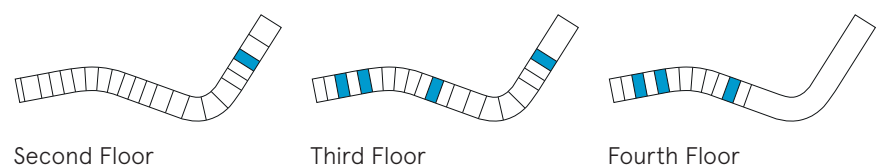


Upper Floor



Sea view

Kitchen/Living Area	13.10m x 3.90m	43'0" x 12'10"
Master Bedroom	9.10m x 3.90m	29'10" x 12'10"
Bedroom 2	3.20m x 4.00m	10'6" x 13'1"
Bedroom 3	5.25m x 4.00m	17'3" x 13'1"
Terrace	77.55 sq m	835 sq ft
Balcony	24.85 sq m	267 sq ft
TOTAL	141.50 sq m	1,523 sq ft



Second Floor

Third Floor

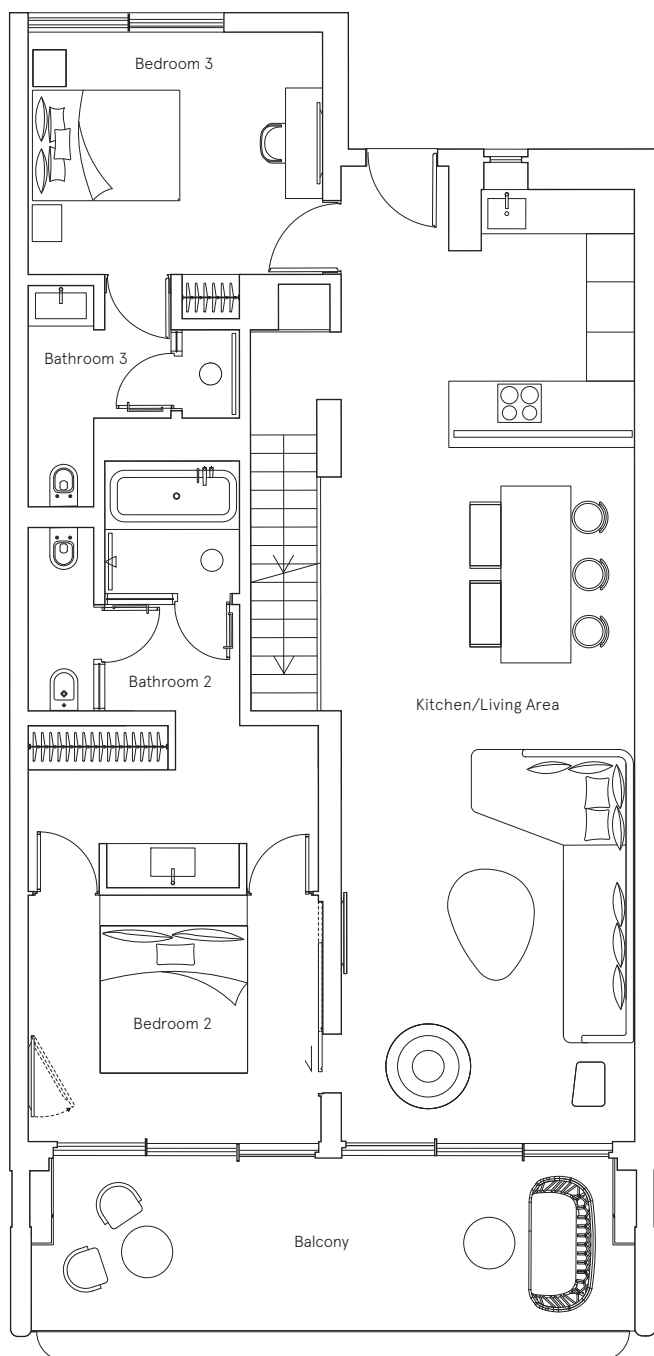
Fourth Floor

3 BEDROOM DUPLEX

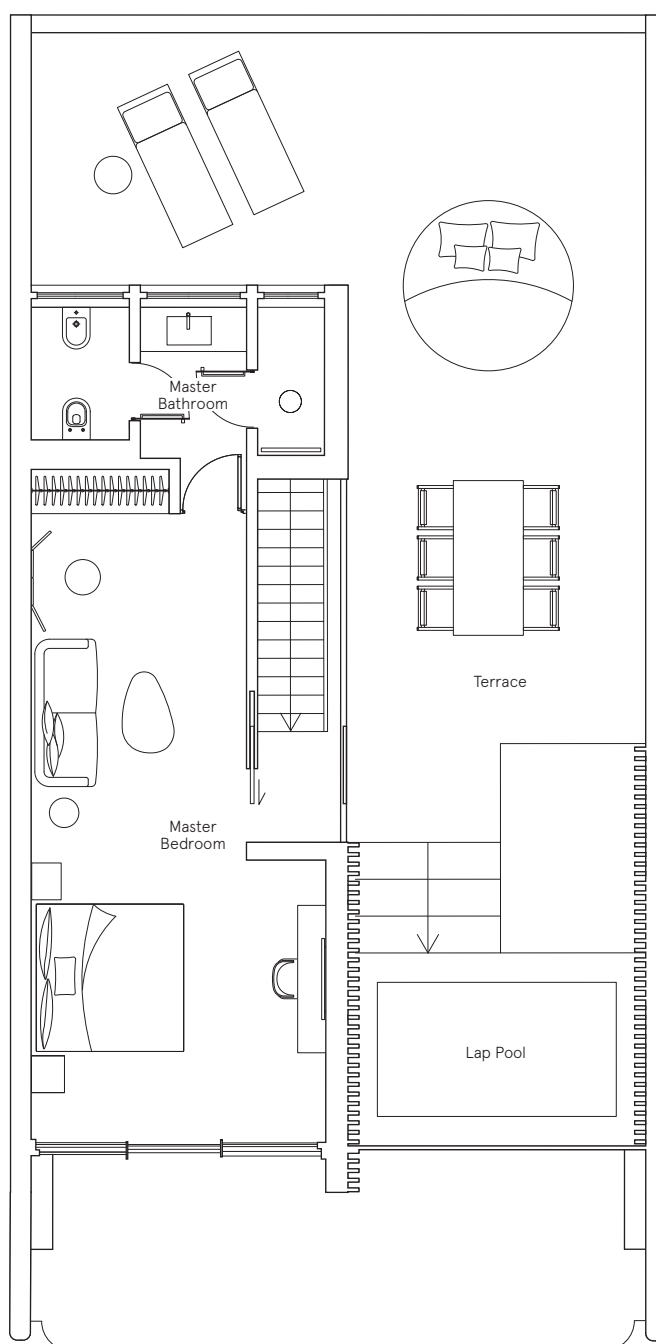
TYPE B

402 410
404 412

Lower Floor

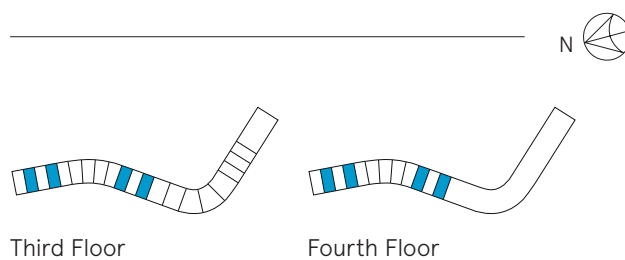


Upper Floor



Sea view

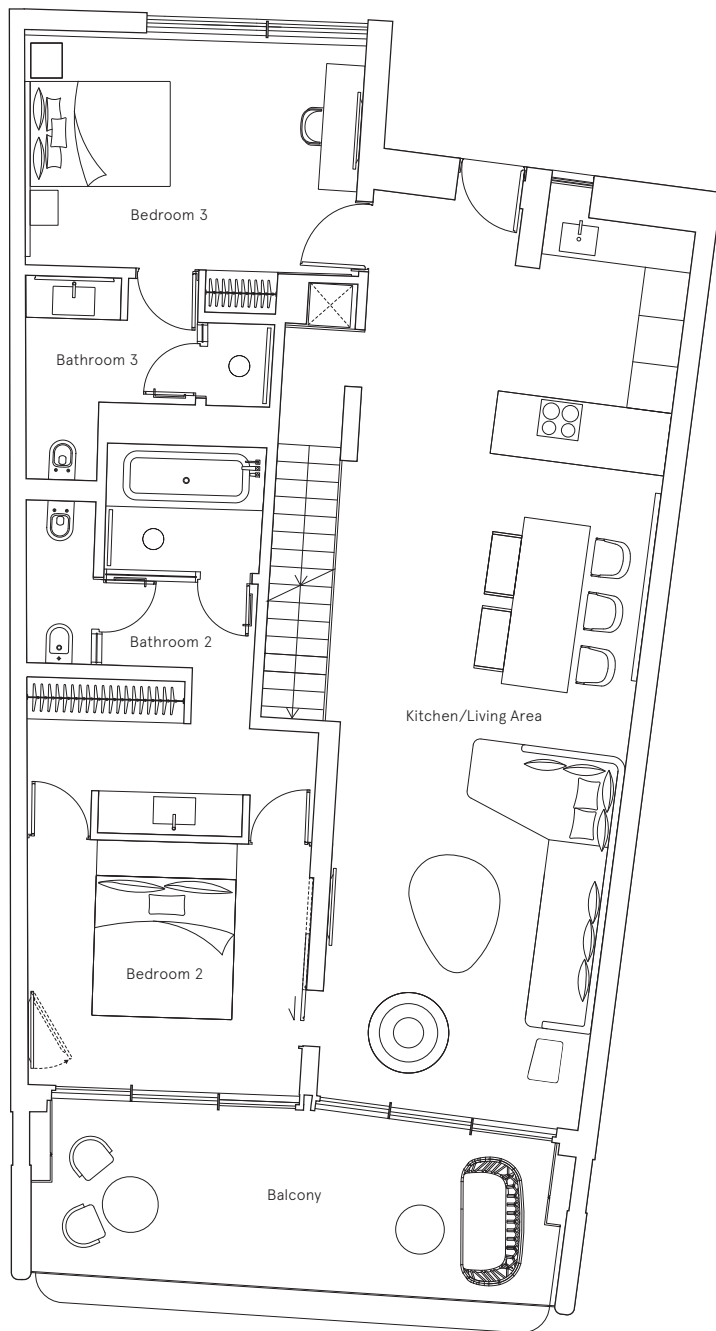
Kitchen/Living Area	13.20m x 4.00m	43'4" x 13'1"
Master Bedroom	9.10m x 4.00m	29'10" x 13'1"
Bedroom 2	3.85m x 4.00m	12'8" x 13'1"
Bedroom 3	3.35m x 4.00m	11'0" x 13'1"
Terrace	77.55 sq m	835 sq ft
Balcony	24.85 sq m	267 sq ft
TOTAL	146.05 sq m	1,572 sq ft



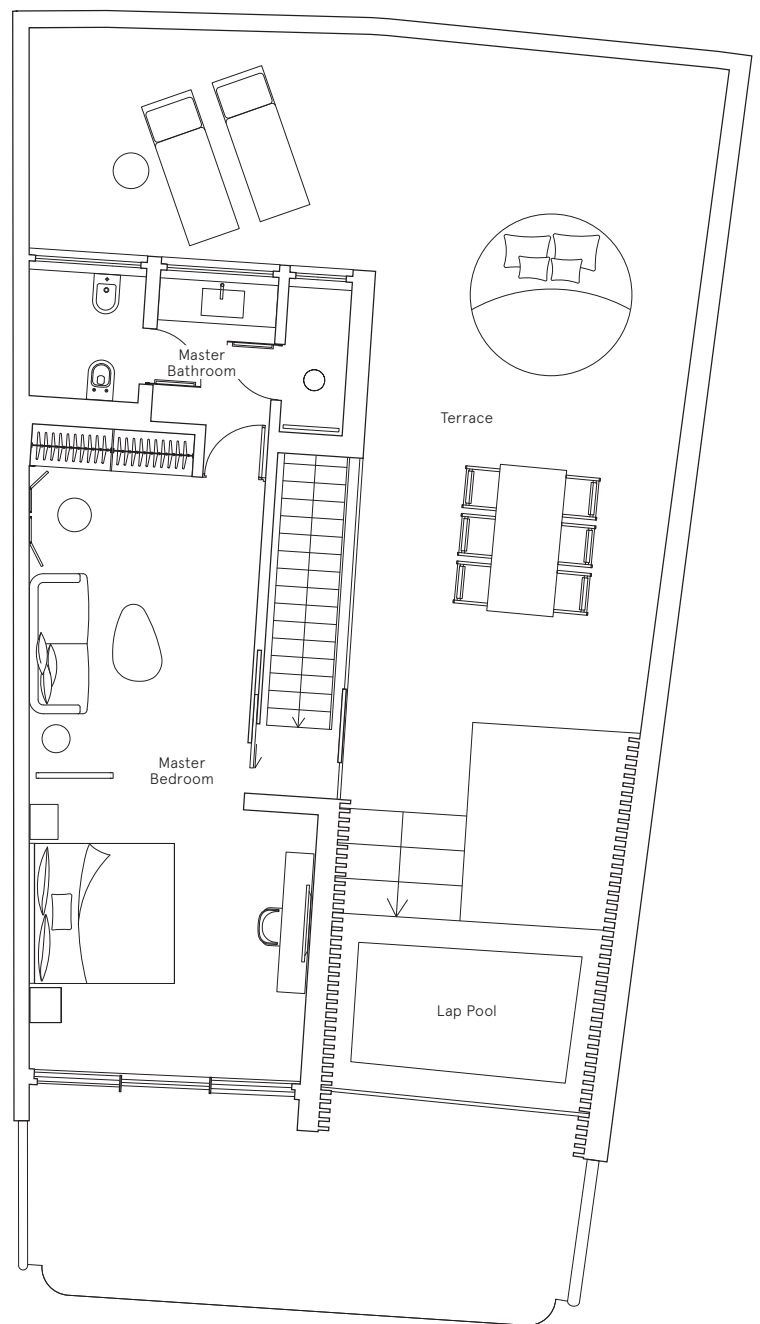
3 BEDROOM DUPLEX TYPE C

406
408

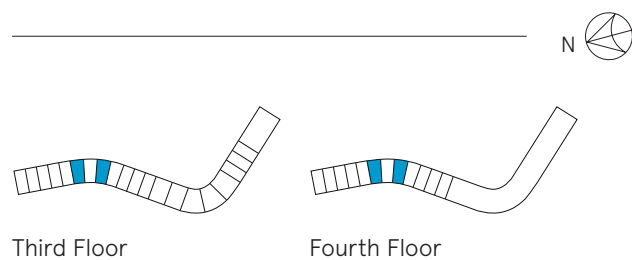
Lower Floor



Upper Floor



Sea view

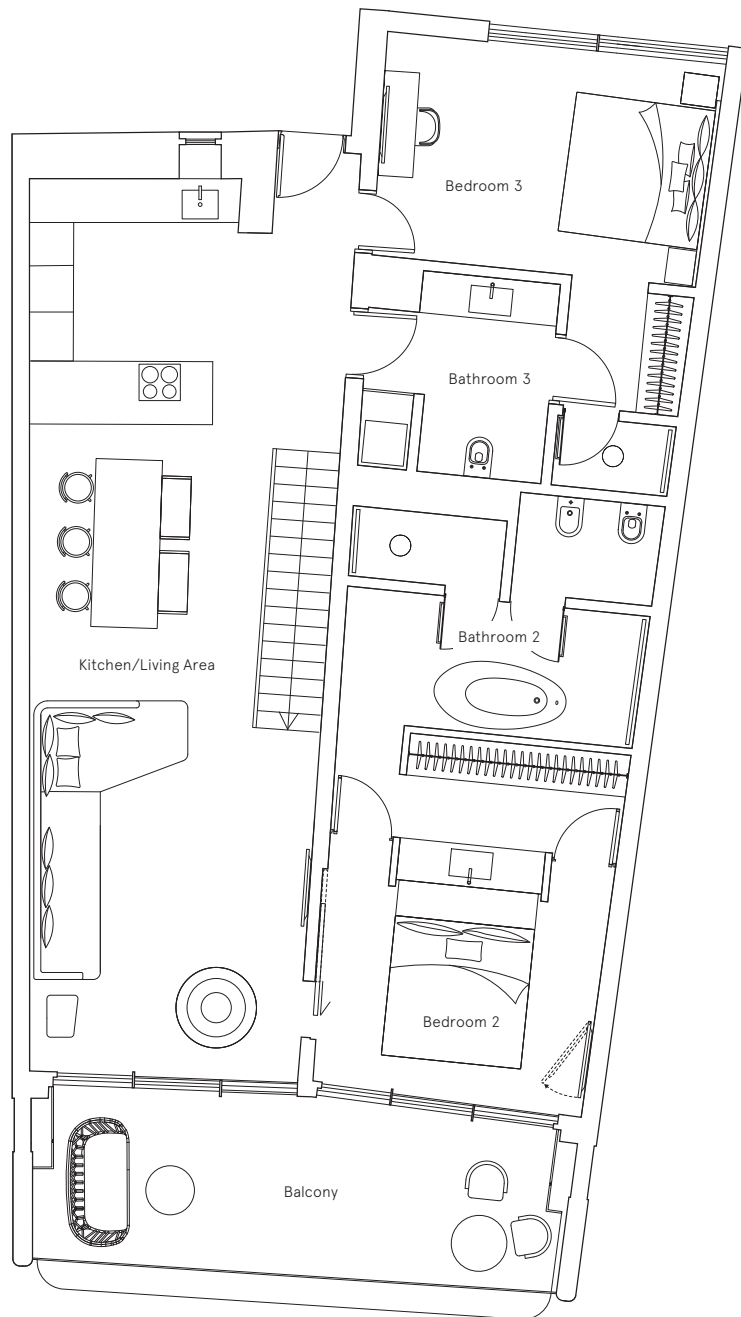


Kitchen/Living Area	13.15m x 4.45m	43'2" x 14'7"
Master Bedroom	9.15m x 4.10m	30'0" x 13'5"
Bedroom 2	3.00m x 4.10m	9'10" x 13'5"
Bedroom 3	5.05m x 4.85m	16'7" x 15'11"
Terrace	85.05 sq m	916 sq ft
Balcony	22.80 sq m	245 sq ft
TOTAL	156.55 sq m	1,685 sq ft

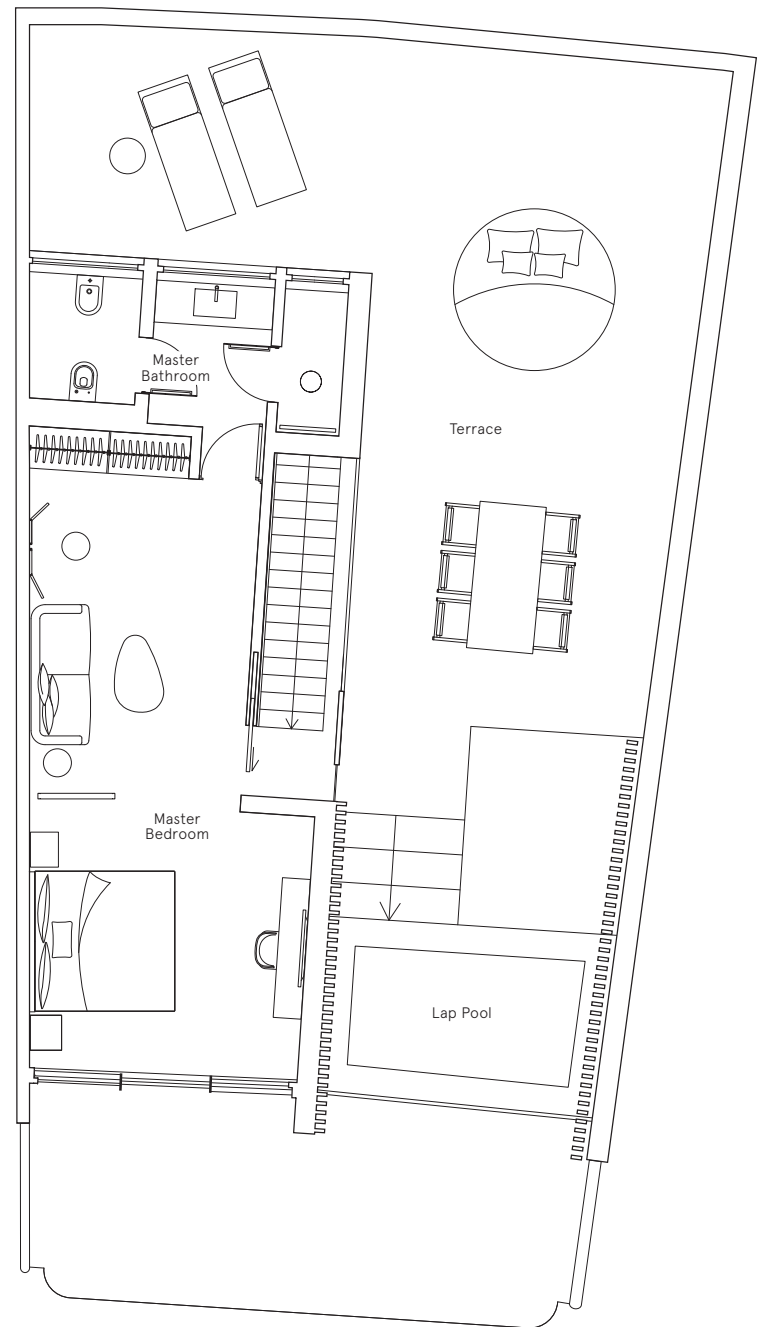
3 BEDROOM DUPLEX TYPE D

407
409

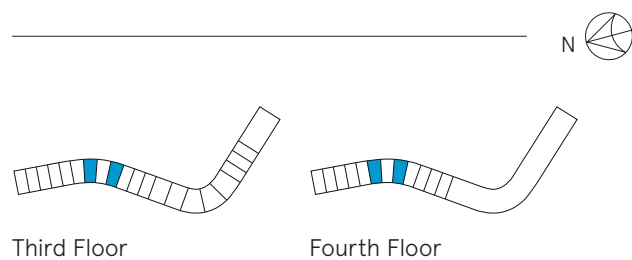
Lower Floor



Upper Floor



Sea view



Kitchen/Living Area	12.95m x 4.40m	42'6" x 14'5"
Master Bedroom	9.20m x 4.10m	30'2" x 13'5"
Bedroom 2	3.50m x 3.90m	11'6" x 12'10"
Bedroom 3	4.05m x 4.65m	13'3" x 15'3"
Terrace	85.05 sq m	916 sq ft
Balcony	22.80 sq m	245 sq ft
TOTAL	156.65 sq m	1,686 sq ft

W Residences Algarve

Estrada da Galé Sesmarias
Caixa Postal nº 290-H
8200-385 Albufeira
Portugal

walgarveresidences.com
sales@walgarveresidences.com
+44 (0)20 7016 3740

Local Sales Office
+351 800 91 93 93



NOZUL ALGARVE S.A.

©2019 Nozul Algarve and Marriott International, Inc. All Rights Reserved. W and its logos are the trademarks of Marriott International, Inc., or its affiliates.

W Residences Algarve are not owned, developed or sold by Marriott International, Inc. or its affiliates ("Marriott"). Nozul Algarve S.A. uses the W marks under a licence from Marriott, which has not confirmed the accuracy of any of the statements or representations made herein. All artist renderings are for illustrative purposes only and are subject to change without notification. All of the services, amenities, benefits and discounts made available to residential owners at W Residences Algarve are as currently scheduled and are subject to change, replacement, modification or discontinuance. Fees may apply.



Designed & produced by Sectorlight (1808236) +44 (0)20 7264 7700 sectorlight.com April 2019.